

Geisinger Lewistown Hospital NIDA Screening

Geisinger

Elizabeth Sharpless
RNC-OB, C-EFM, BSN
Operations Manager
The Family Place, Geisinger
Lewistown Hospital

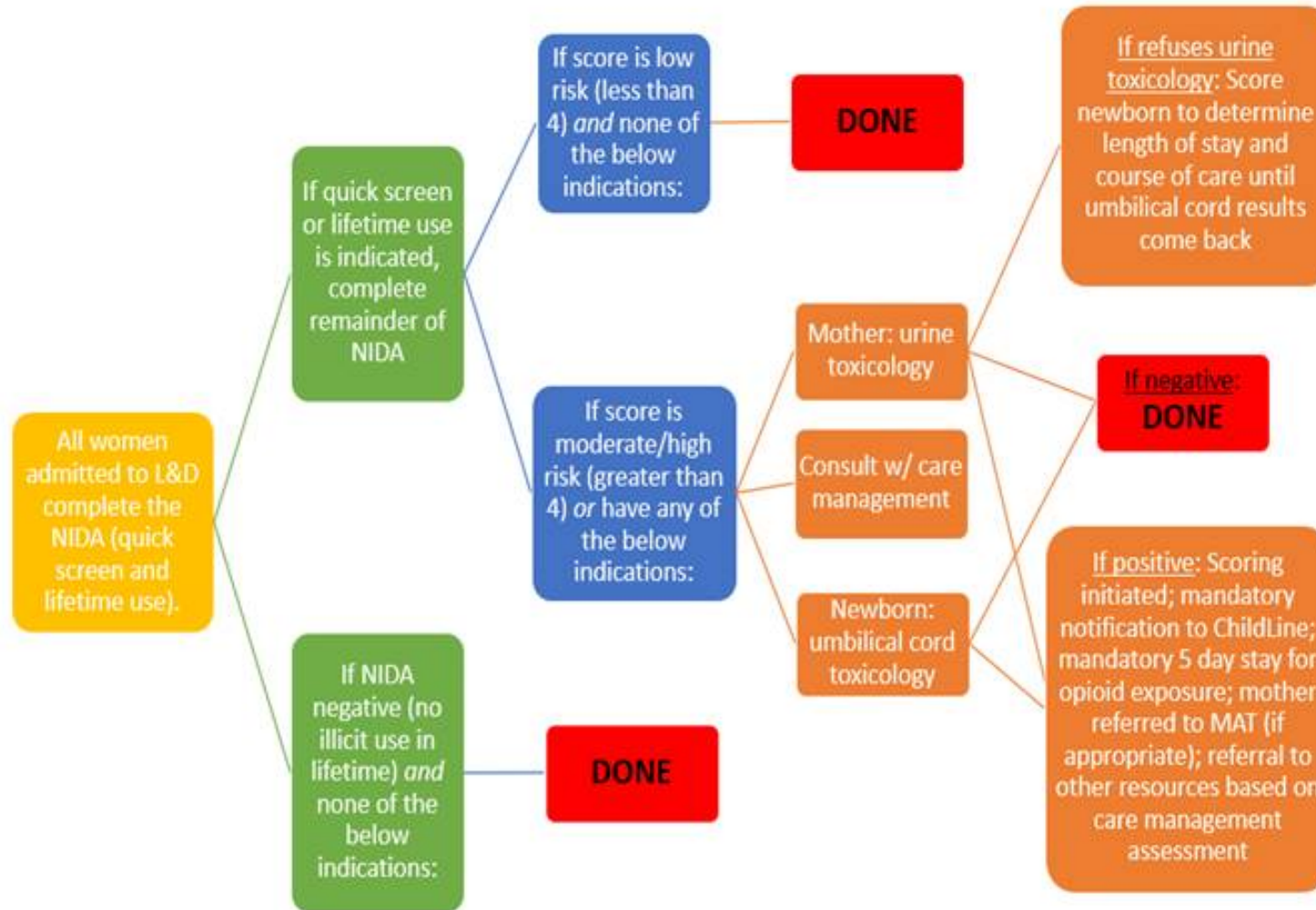
NIDA Quick Screen

- Self-reporting tool
- Patient completes upon admission
- Nurse completes scoring and follows the algorithm for processes

Directions: Use the questions in the orange box to answer the frequency of use that applies to you.

NIDA Quick Screen Question						
	<i>In the past year, how often have you used the following?</i>	Never	Once or Twice	Monthly	Weekly	Daily or Almost Daily
1	<i>Alcohol: 4 or more drinks a day</i>					
2	<i>Tobacco Products</i>					
3	<i>Prescription Drugs for Non-Medical Reasons</i>					
4	<i>Illegal Drugs</i>					
5	<i>Are you currently enrolled in a medication-assisted treatment program where you are prescribed medication to help you with your addiction?</i>				Yes	No

Algorithm



- Goal was 80% completion rate
- First month after go-live 75% completion rate
- After November 2019 completion rate has remained >80%

