

Collecting Race, Ethnicity and Language Data

Aswita Tan-McGrory, MBA, MSPH

Director

The Disparities Solutions Center

Massachusetts General Hospital

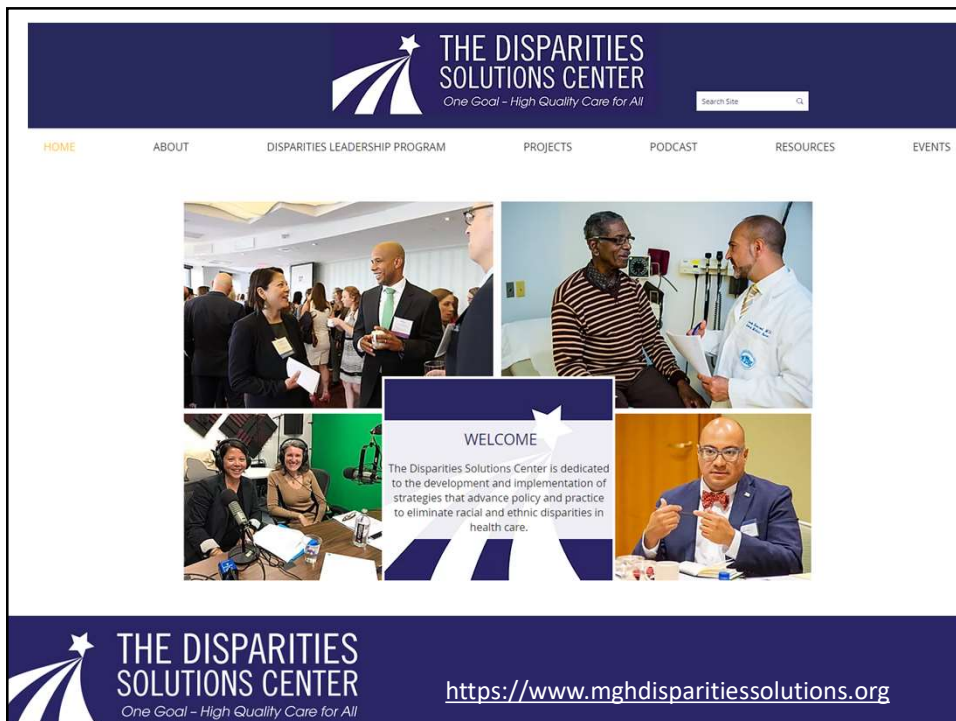
February 17, 2021



Follow us on Twitter: @MGHdisparities, @atanmcgrory



Like us on Facebook: www.facebook.com/disparitiessolutionscenter



Outline

- Case Study
- Importance of self-report data
- Some challenges, lessons learned and resources
- How can you use the data?



**THE DISPARITIES
SOLUTIONS CENTER**
One Goal – High Quality Care for All

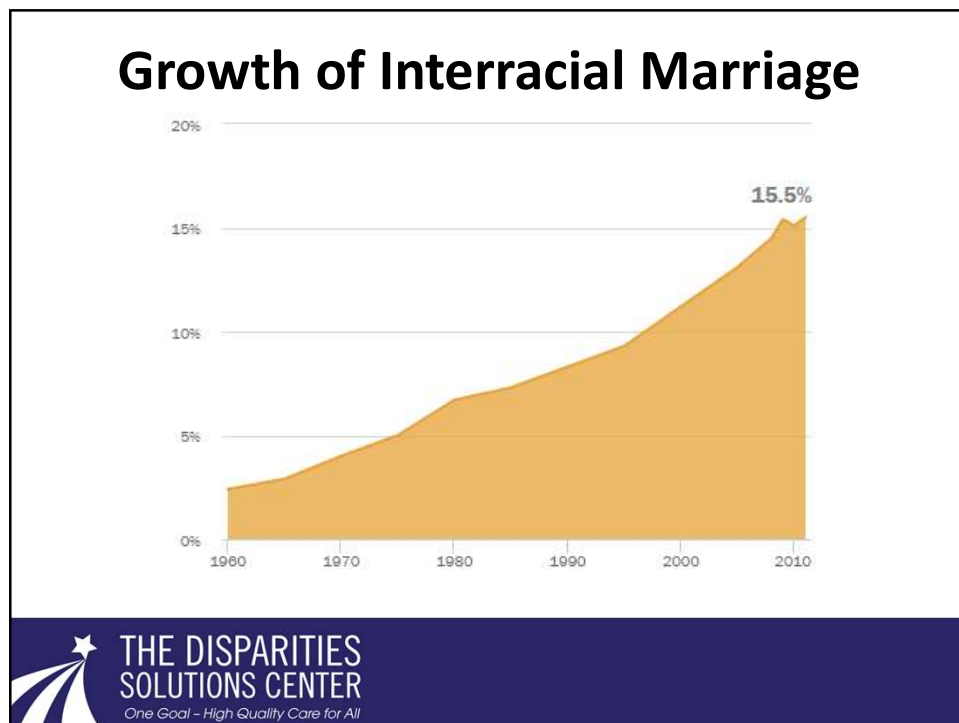
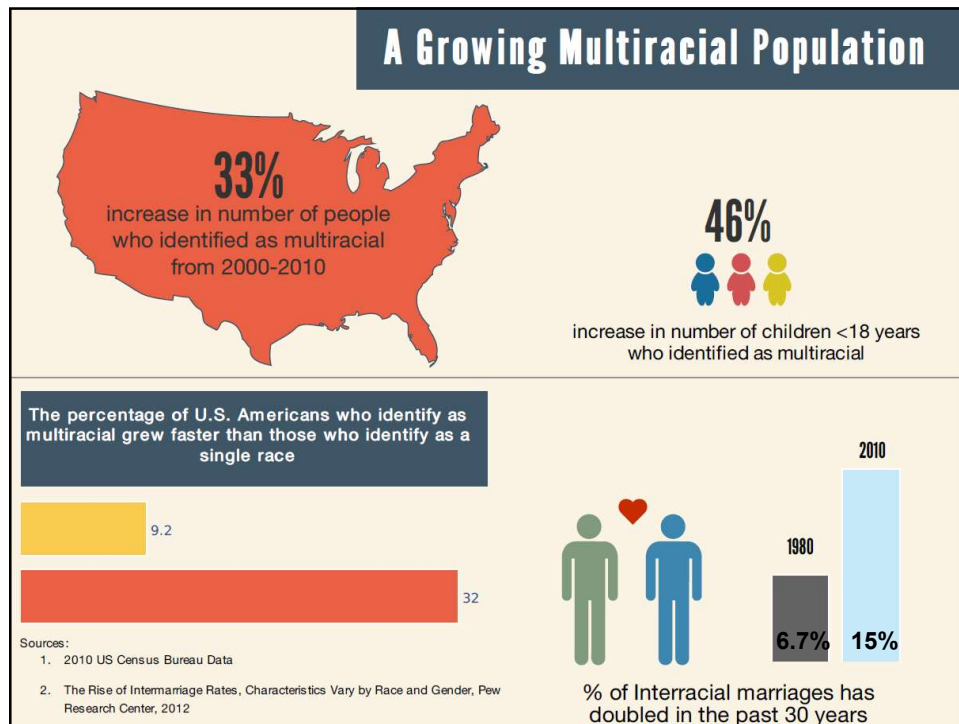
Office of Management & Budget (OMB) Categories

- Race:
 - ☐ American Indian or Alaska Native
 - ☐ Asian
 - ☐ Black or African American
 - ☐ Native Hawaiian or Other Pacific Islander
 - ☐ White
- Ethnicity:
 - ☐ Hispanic or Latino
 - ☐ Not Hispanic or Latino

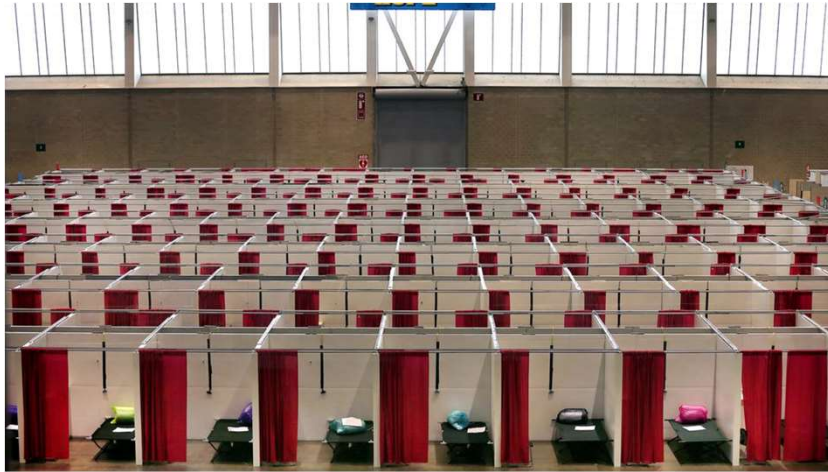
*OMB is seeking public comments and changes to this 1997 Federal standard



**THE DISPARITIES
SOLUTIONS CENTER**
One Goal – High Quality Care for All



Importance of Building Community Trust



Address Privacy Concerns and Immigration



Red Cards

All people in the United States, regardless of immigration status, have certain rights and protections under the U.S. Constitution. The ILRC's Red Cards help people assert their rights and defend themselves in many situations, such as when ICE agents go to a home.



What We Do

- Community Resources
- Partners and Projects
- Policy Advocacy
- Red Cards
- Technical Assistance
- Legal Interviews

Optimizing Epic

Add'l Patient Info

Additional Patient Information

Patient race:	1	!	Ethnicity:	1	!
Other Ethnicity:			Hispanic Y/N?		!
Preferred language:		!	Need interpreter?		!
Written language:	1	!	Patient type(s):	1	
Religion:		!	Marital status:		!
Maiden name:		!	Mother's maiden:		!
Veteran status:		!	Special needs comments:	1	
Special needs:	1	!	Country obtained:		
Education level:			Birthplace Country:		!
Medicare HIC#:					
Birthplace State:		!			

Accept Cancel

SOLUTIONS CENTER
One Goal - High Quality Care for All

Race Field Values

Category Select

Search:

Title
American Indian or Alaska Native
Asian
Black or African American
Declined
Native Hawaiian or Other Pacific Islander
Other
Unavailable
White

8 categories loaded.

Accept Cancel

Ethnicity Field Values

African American	Cambodian	Eastern European-Croatian	Middle Eastern-Israeli
African-Ethiopian	Cape Verdean	Eastern European-Polish	Middle Eastern-Lebanese
African-Ghanaian	Caribbean Island-Barbadian	Eastern European-Ukrainian	Middle Eastern-Palestinian
African-Liberian	Caribbean Island-Dominica Islander	European-English	Middle Eastern-Syrian
African-Nigerian	Caribbean Island-Jamaican	European-French	Other-Specify
African-Sierra Leonian	Caribbean Island-Tobagoan	European-German	Portuguese
African-Somalian	Caribbean Island-Trinidadian	European-Greek	Puerto Rican
American	Caribbean Island-West Indian	European-Irish	Russian
Asian Indian	Central American-Belizean	European-Italian	Salvadoran
Asian-Bangladeshi	Central American-Costa Rican	European-Scottish	South American-Argentinian
Asian-Bhutanese	Central American-Indian	European-Spanish	South American-Bolivian
Asian-Burmese	Central American-Nicaraguan	Filipino	South American-Chilean
Asian-Hmong	Central American-Panamanian	Guatemalan	South American-Criollo
Asian-Indonesian	Chinese	Haitian	South American-Ecuadorian
Asian-Iwo Jimian	Colombian	Honduran	South American-Guyanese
Asian-Madagascar	Cuban	Japanese	South American-Indian
Asian-Maldivian	Declined	Korean	South American-Paraguayan
Asian-Nepalese	Dominican	Laotian	South American-Peruvian
Asian-Okinawan	Eastern European-Albanian	Mexican, Mexican American, Chicano	South American-Uruguayan
Asian-Singaporean	Eastern European-Armenian	Middle Eastern-Afghanistani	South American-Venezuelan
Asian-Sri Lankan	Eastern European-Bosnian	Middle Eastern-Assyrian	Unavailable
Asian-Taiwanese		Middle Eastern-Egyptian	Vietnamese
Asian-Thai		Middle Eastern-Iranian	
		Middle Eastern-Iraqi	



**THE DISPARITIES
SOLUTIONS CENTER**
One Goal - High Quality Care for All

Hispanic Ethnicity Field Values

Category Select

Search:

Title
Declined
No Non Hispanic
Unavailable
Yes Hispanic

4 categories loaded.

Accept Cancel

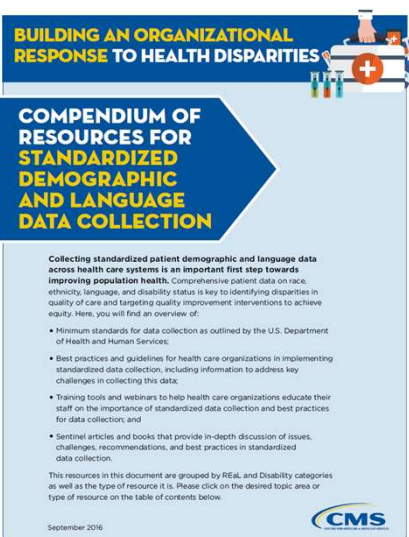


**THE DISPARITIES
SOLUTIONS CENTER**
One Goal - High Quality Care for All

Improving Data Collection

- Training and scripting for central and on-site Registration staff
- Survey to assess Accuracy of REaL data & Mitigation

"Next I will ask you some more personal questions. We use this information to make sure all of our patients receive the best care possible, regardless of their personal background. The information is kept confidential and is used to develop programs to improve care for our diverse patients."



Available at:

<https://www.cms.gov/About-CMS/Agency-Information/OMH/Downloads/Data-Collection-Resources.pdf>

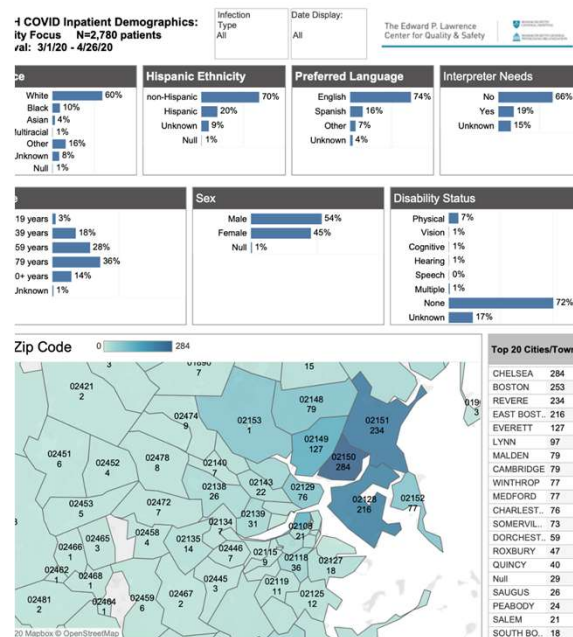


10 Years of AREHQ at Mass General

- **Stratifying** quality metrics by race, ethnicity, language, etc. to highlight and uncover disparities in care
- **Partnering** with clinical colleagues to design interventions to alleviate disparities
- **Listening** to patients and learning from their shared experiences
- **Monitoring** post-intervention to ensure effectiveness
- **Sharing** these findings with the Mass General community and the public



You Need Racial, Ethnic and Language Data to Determine Where to Focus Your Mitigation Efforts



Thank You

Aswita Tan-McGrory, MBA, MSPH
Director
The Disparities Solutions Center
Massachusetts General Hospital
atanmcgrory@partners.org



Follow us on Twitter: [@MGHdisparities](https://twitter.com/MGHdisparities), [@atanmcgrory](https://twitter.com/atanmcgrory)



Like us on Facebook: www.facebook.com/disparitiessolutionscenter



**THE DISPARITIES
SOLUTIONS CENTER**
One Goal - High Quality Care for All