

Community-Based Organization (CBO) Spotlight

Carol Frazer, LPC

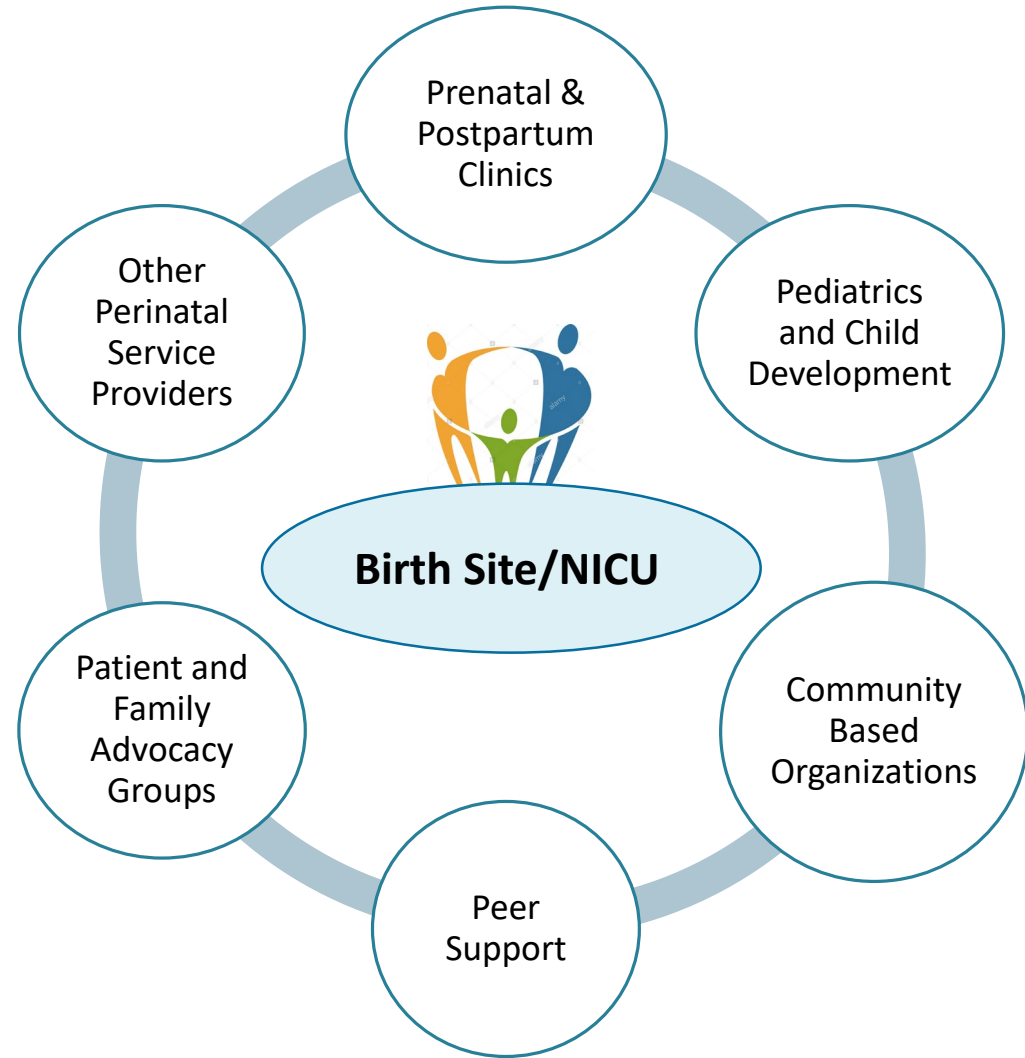
Pittsburgh Regional Health Initiative

Community-Based Organizations (CBOs) have an important part to play

CBOs can:

- ✓ **Contribute their knowledge, experience, and approaches** in their areas of specialization to the Learning Collaboratives and virtual sessions
- ✓ **Refer their clients to PQC sites, programs, and/or health plans** designed to meet their maternal health and wellness goals
- ✓ **Partner with the PA PQC sites** in their quality improvement projects to coordinate care, develop workflows and communication pathways, and ensure timely access to appropriate services among care providers
 - Regulatory and confidentiality protocols to create individualized health plans
 - Memorandums of Understanding

Connecting PA PQC sites and Community Partners



5-minute exercise: Make a List

What are the 3 most common challenges your patients have that affect their health outcomes and treatment plan success, but which you are not capable of addressing directly?

Please feel free to discuss with your teammates and table neighbors...

Community-Based Organizations (CBOs) have an important part to play

CBOs CAN OFFER EXPERTISE, EXPERIENCE, AND SUPPORT FOR A VARIETY OF CHALLENGES YOUR PATIENTS, FAMILIES, AND CLIENTS MAY BE FACING

Such as:

- Mental Health
- Substance Use Disorders
- Home Visits
- Transportation
- Food Insecurity
- Domestic Violence
- Insurance Navigation
- Baby Supplies
- Housing
- Patient and Family Advocacy

Family Health Council of Central PA

Karen McGraw, VP of Advocacy and Development

The Foundation for Delaware County

Katie Kenyon, Community Engagement Director

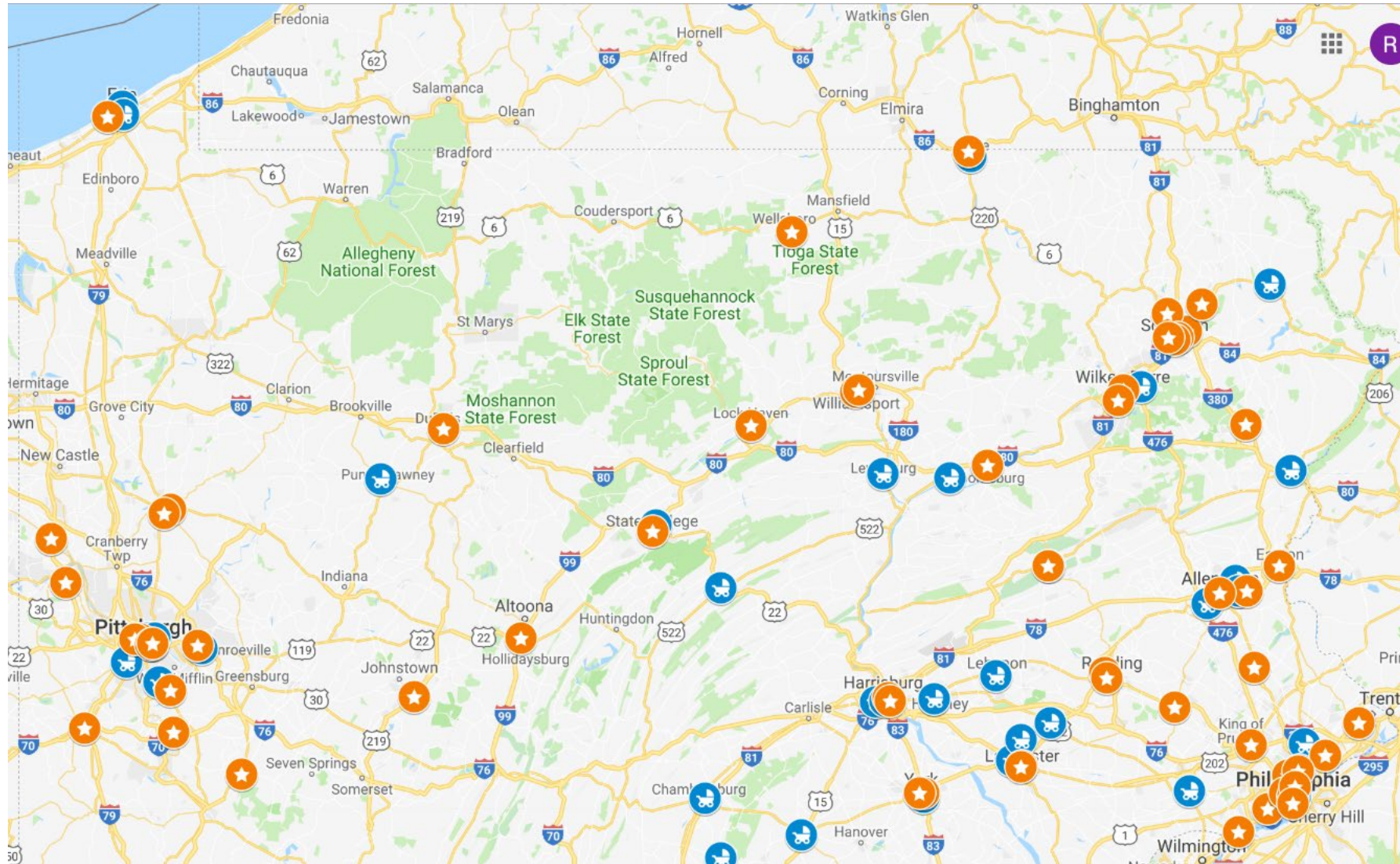
Maternity Care Coalition

Melissa Patti, Director of Specialized Community Health

OUD Centers of Excellence (COE)

- Provides expertise to the wider provider community in a “hub and spoke” model
- Accepts warm hand offs of individuals with OUD
- Ensures that people with OUD stay in MAT and comprehensive services
- Facilitates recovery by helping individuals find stable housing and employment and reestablishing family/community relationships
- Obtains written consent for sharing pertinent information

PQC Sites and COEs



LOUD COE at Reading Hospital

Valerie Chandler, OUD Center of Excellence Project Manager

Next Steps

- 1) Include CBOs in an intentional and transparent way that fosters teamwork, collaboration, and coordination between caregivers, patients, and families to improve access to services and improve health outcomes.
- 2) Spotlight 3-5 CBOs at future Learning Collaboratives
- 3) Connect and build networks at Learning Collaboratives and other community events to bring ideas back to your PQC site or organization
- 4) Include CBOs in team discussions during the working sessions and at your PQC site
- 5) Build CBOs into your PA PQC Quality Improvement Plans